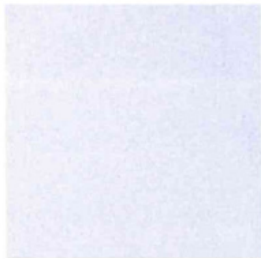
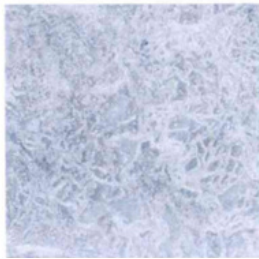


WIEDERENTDECKTE MARMORSORTEN



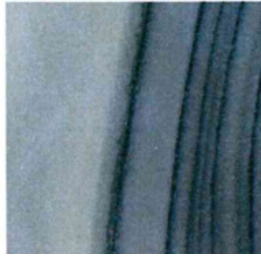
WEISSER THASOS



SKUWOS-BRESCHESILBER



SONNE AUS SILLA
ONYX



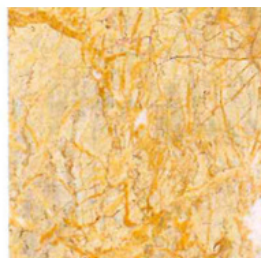
CIPOLLINO



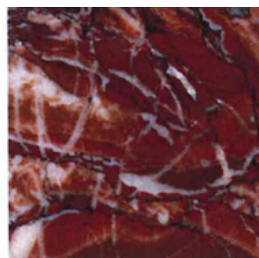
SEMESANTONE



ONYX AUS SILLA MIT
BRAUNER ÄDERUNG



ANTIQUES GELB
AUS MYKALISSOS



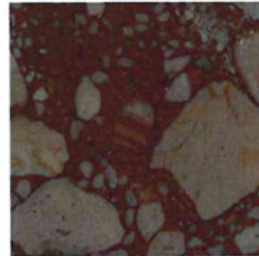
ANTIKE
PFIRSICHLÜTEN



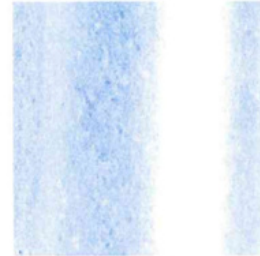
GRAUER MARMOR
AUS CHIOS MIT
BRAUNER ÄDERUNG



ANTIQUES SCHWARZ
AUS SPARTA



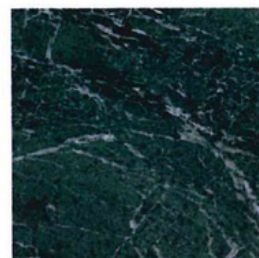
EPIDAURO
BRESCHES



PROKONNESISCHE
R MARMOR



EPIDAURO ROT



GRÜN AUS TINOS



ÄGÄISCHES HERZ



PAESAGGIO GRÜN
AUS TINOS



WEISSER ONYX AUS
SILLA



ANTIQUES GRÜN